

=====

PN8275

QR-PWM QR-PFM Burst-mode

SoftDriver

EMI

PN8275

/ X

OTP

1Ñ7J Ê y

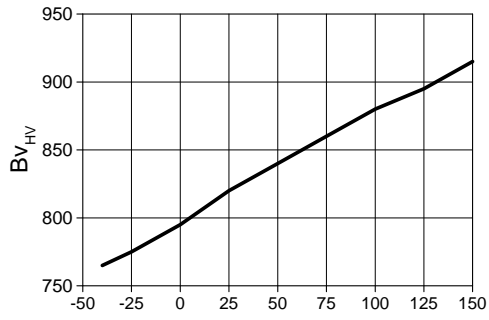
1Ñ7J =	1Ñ7J 7 '	1Ñ7J Í7- ýF
DMG	1	ě.ñ E7J , FJE÷+eLk 6 »G÷ gEÃ *+e » ¼EÃ •+e » ðà# Bg ð#{ ÆEÃ *E÷ » Ô ÆEÃ •4i>• - úQ ~ » 6NÁ Í7-
FB	2	ýO ₃ EÃ • E7J
CS	3	+e#q ð#{EÃ • E7J
GND	4	`

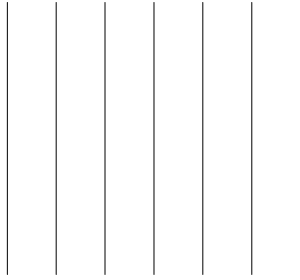
VDD-0.3~43V-55~150
FB CS DMG-0.3~7V	10260
GATE-0.3~15V	R _{JC} SOP-780 /W
HV -0.3~800V	ESD ⁽¹⁾ HBM ±4kV
-40~150	ESD ⁽²⁾ MM 300V

1.

PN8275

Chipown





1.

V_{DD} 1.5mA
 V_{DD} V_{DDon}
 V_{DD}
 V_{DD}

2.

CS 8.0ms

3.

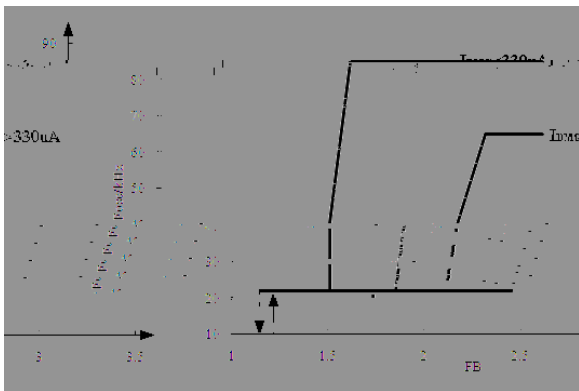
PN8275 PWM
 I_{DMG}>330uA 65kHz I_{DMG}<330uA 85kHz PN8275

4.

PN8275 FB

FB V_{FB_PFM}

Fosc_{BM}



5.

PN8275 DCM

6.

PN8275

V_{FB_BM_L} 1.15V FB V_{FB_BM_H}

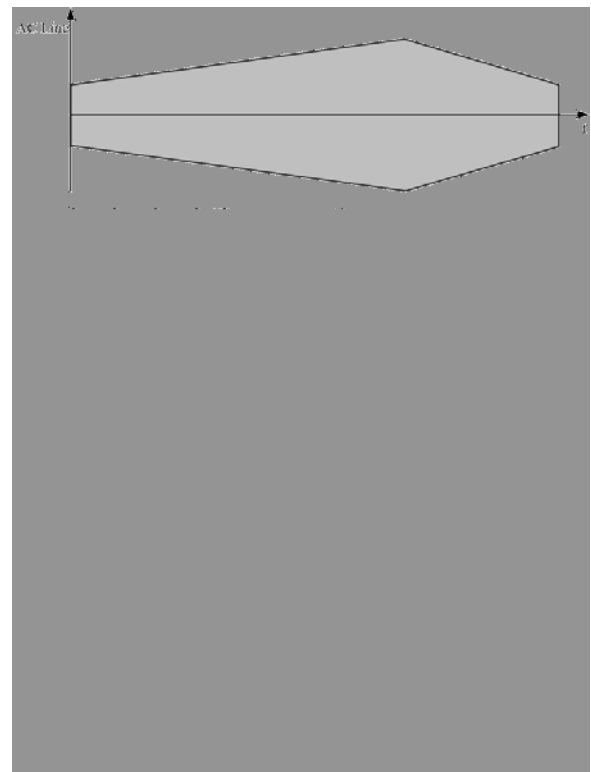
7.

- PN8275

PN8275

Brown-Out HV V_{BNO}
 GATE VDD VDDon VDDoff
 VDD HV

V_{BNI} VDD>V_{BI} GATE



8.

- PN8275P

PN8275P

AC Line OVP HV V_{OVP}
 GATE PN8275P
 HV V_{OVP}-V_{OVP_hys} GATE

9.

PN8275

EMI

10.

	V_{FB}	V_{th_OLP}
Td_OLP	PN8275	
PWM	VDD	

11. X

PN8275

PN8275 HV GND

X

IEC62368-1:2014

12.

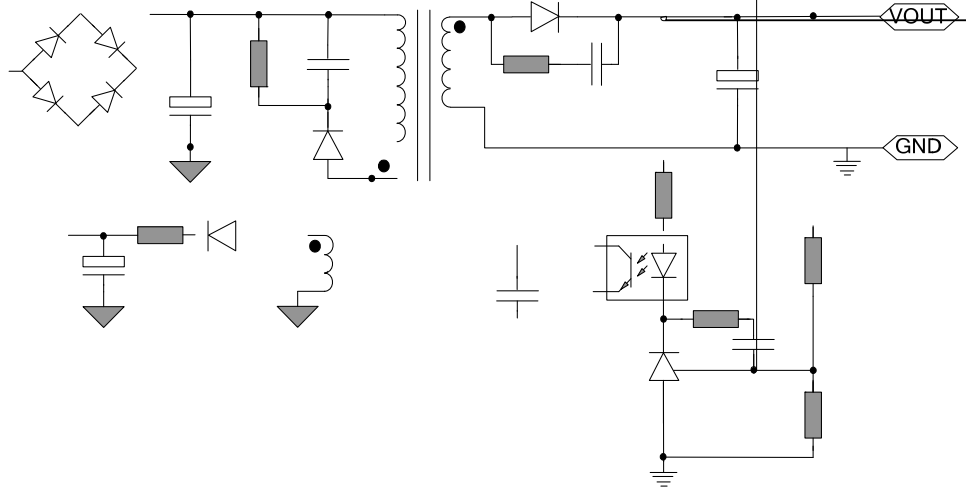
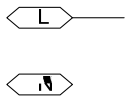
PN8275

13.

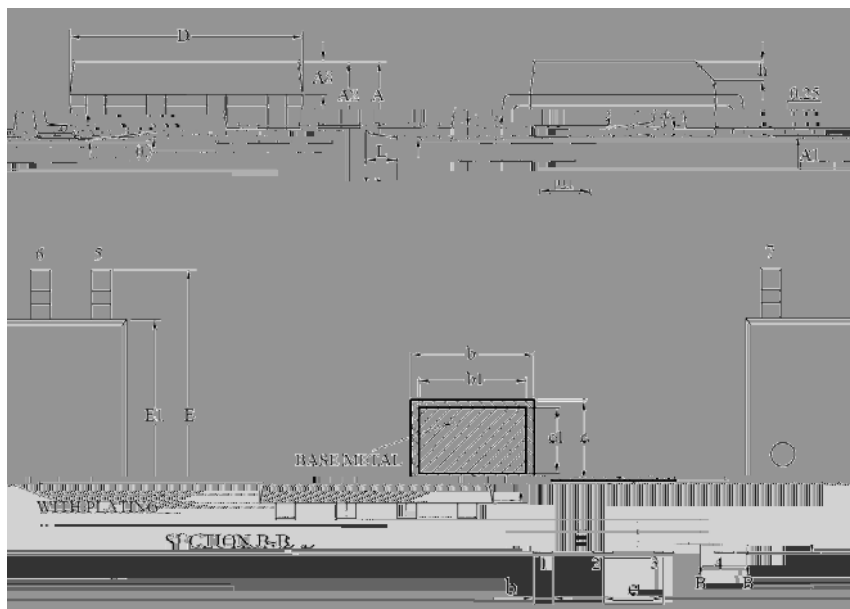
PN8275 DMG

		I_{LC}	CS	
$I_{LC}=K*I_{DMG}$	$K=0.375$	DMG		
	I_{LC}		CS	CS
	R_{cs}			
	R3			





SOP-7

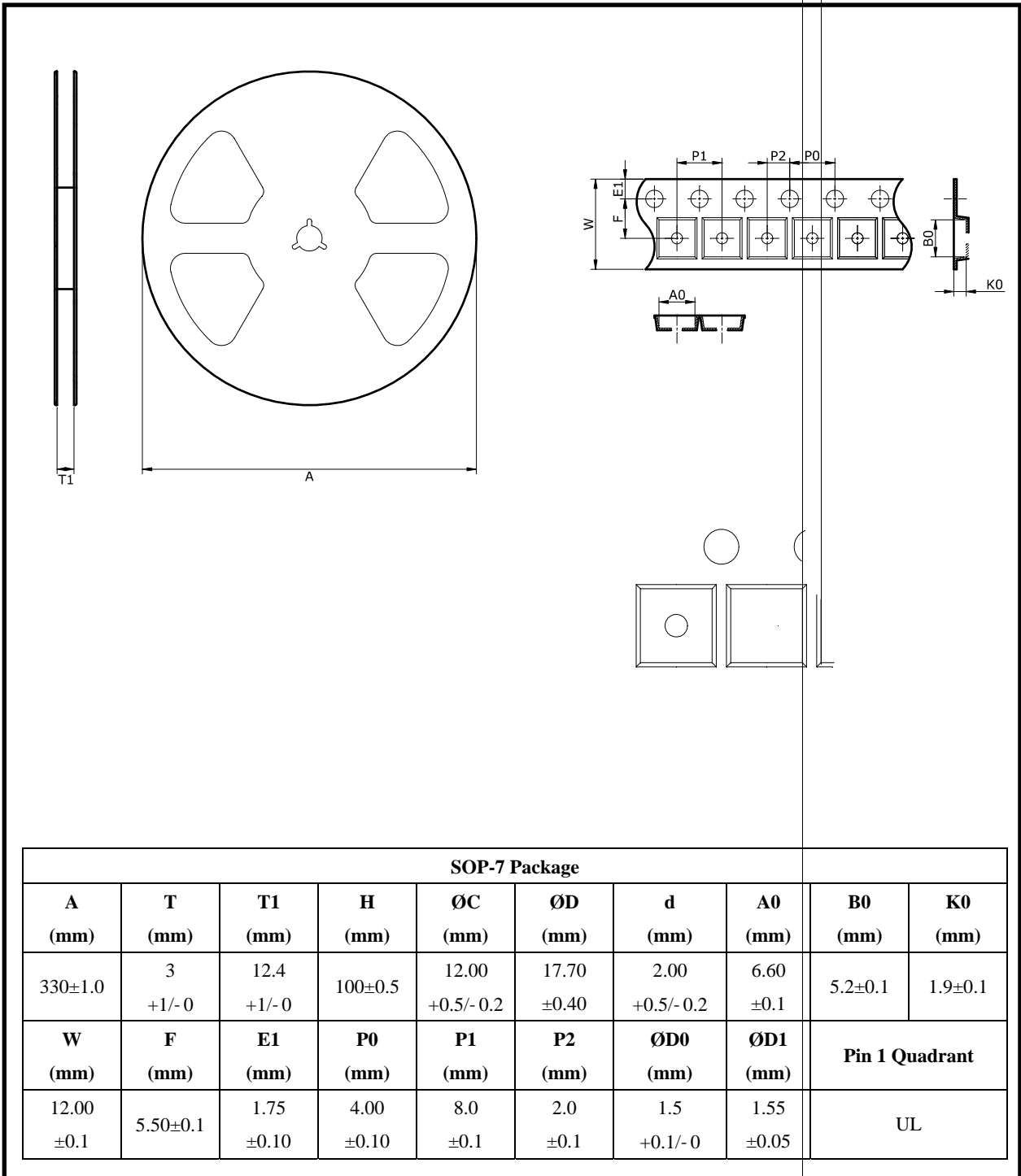


	(mm)	(mm)	(mm)		(mm)	(mm)	(mm)
A	—	—	1.75	D	4.70	4.90	5.10
A1	0.10	0.15	0.225	E	5.80	6.00	6.20
A2	1.30	1.40	1.50	E1	3.70	3.90	4.10
A3	0.60	0.65	0.70	e	1.27(BSC)		
b	0.39	—	0.48	h	0.25	—	0.50
b1	0.38	0.41	0.43	L	0.50	—	0.80
c	0.21	—	0.26	L1	1.05(BSC)		
c1	0.19	0.20	0.21		0°	—	8°

PN8275SSC-R1P	PN8275 YWWPXXXX	SOP-7
PN8275SSC-R1	PN8275 YWWAXXXX	SOP-7

Y WW P/A XXXX

- :
1. ;
 - 2.



1. ;
- 2.
- 3.
- 4.

